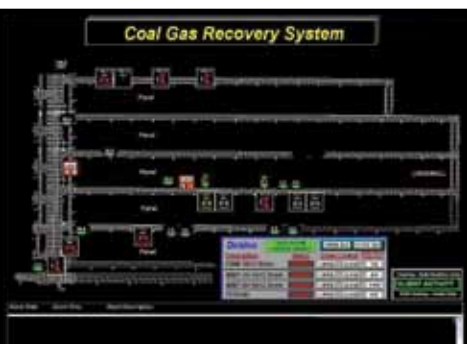
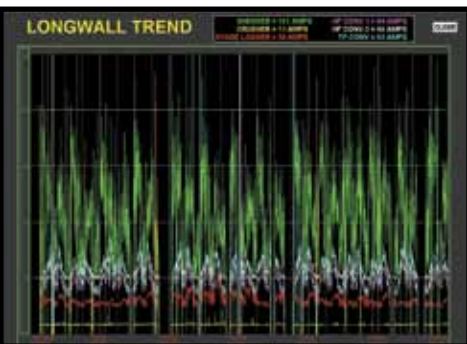


Mine Wide Monitoring System



Features

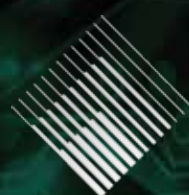
- MSHA-compliant monitoring system
- Modular design easily integrates multiple systems
- Scalability allows the system to grow with the mine
- Automatic electronic data storage
- Built-in security to limit and control user access
- Surface components are rack-mounted for neat installations - even in small quarters

The Pillar Innovations Mine Wide Monitoring System (MWMS) is designed as a turn-key package to centralize and integrate all mine processes into one dependable system. Gone are the days of multiple proprietary systems and control rooms littered with servers and screens. The Pillar Innovations system ushers in a new era of peace of mind with user-friendly integrated systems.

The Pillar system is based on an open architecture that provides for integration of all mining control and monitoring hardware. This architecture leverages the reliability and controllability of PLCs with the speed and accuracy of fiber optics to provide a state-of-the-art backbone for all mine data.

The modular software front-end allows mines to tailor the system by purchasing only the modules they need for their mine. Custom modules can also be written for unique circumstances. Many of the modules display components on a dynamic mine map interface. This creates a drag-and-drop environment so that components can be added or modified.

NATIONWIDE SERVICE & SUPPORT



Pillar LLC
INNOVATIONS

www.pillarinnovations.com

TAKING THE HIGHEST TECHNOLOGY TO NEW DEPTHS



The software is available to individual clients at the mine network level or remotely via a secure and proven web client. Additionally, provision is made to limit or restrict access so that only qualified individuals have the ability to access or make changes to certain areas of the software.

The Atmospheric Monitoring System (AMS) is a key part of the MWMS. Pillar's software and gas sensors from Conspec Controls are brought together in this MSHA-approved system. Sensors and other underground components are displayed on a mine map so that the location, type, and severity of an atmospheric condition can be quickly identified. Simultaneously, underground audible and visual alarms notify miners of hazardous conditions.

Pillar's staff includes software engineers, qualified technicians and MSHA electricians that are available around the clock. In addition to designing the system, engineers provide thorough training to the mine personnel who will be responsible for the day to day operation and maintenance of the system. After commissioning, this same staff is available for 24/7 technical support.

11/05/10

Headquarters

164 Corporate Drive PO Box 550 Grantsville, MD 21536
P. 301.245.4007 F. 301.245.4009

Morgantown, WV

P. 304.284.0916
F. 304.284.0919
40 Commerce Drive
Suite B
Morgantown, WV 26501

Nitro, WV

P. 304.769.5814
F. 304.769.5816
3802 38th Street
PO Box 9
Nitro, WV 25143

Evansville, IN

P. 812.474.9080
F. 812.474.9082
6149 Wedeking Avenue
Building B
Evansville, IN 47715

Farmington, NM

P. 505.326.7600
F. 505.326.3233
24 County Road
1956
Farmington, NM 87401

Grand Junction, CO

P. 970.243.5999
F. 970.243.5888
2317 Grand Park Drive
Unit A-2
Grand Junction, CO 81505