

# INDUSTRIAL AUTOMATION

Automation and Control for your Site

Pillar Innovations is an experienced turn-key provider of PLC programming, software control packages, network integration, and instrumentation for many leaders in the energy, manufacturing, and public works industries. We'll take your project from design and fabrication to installation and commissioning.

## PLC & ROBOTIC PROGRAMMING

### PLC Experience

- Allen Bradley
- Schneider Electric
- Siemens
- Omron
- Mitsubishi
- Proface
- Beckhoff
- Toyopuc
- Horner

### Robotic Experience

- Fanuc
- Motoman/Yaskawa
- ABB
- Mitsubishi
- Denso
- Yamaha

## SCADA / HMI

- FactoryTalk View SE & ME
  - Plant Pax
- ClearSCADA
- Ignition
- Samsara (Cloud based SCADA)

## ELECTRICAL ENGINEERING, PANEL DESIGN, & FABRICATION

### Panel Design & Fabrication

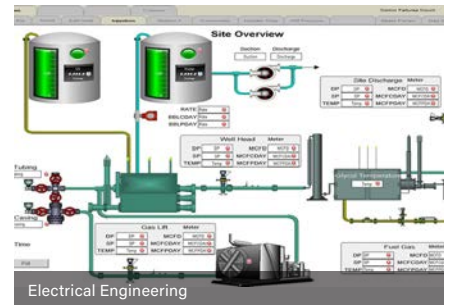
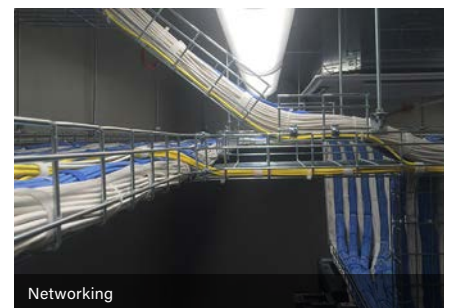
- UL 508A Listed Panel Shops
- NFPA 70E

### Hazardous Location Design & Fabrication

- ATEX
- MSHA

## MACHINE DESIGN, FABRICATION, & RETOOLING

- Custom Machines from Concept to Production
- 100,000 sq. ft. Fabrication Shop
- Engineering & Design



## MACHINE VISION

- Programming, Training, Setup, Troubleshooting, Commissioning
- Experience:
  - Cognex
  - Keyence
  - Banner

## INSTRUMENTATION & CALIBRATION

- | Protocols  | Applications   |
|--|--|
| <ul style="list-style-type: none"><li>▪ HART</li><li>▪ 4-20ma</li><li>▪ Modbus</li><li>▪ 0-5/10V</li></ul> | <ul style="list-style-type: none"><li>▪ Flow</li><li>▪ Pressure</li><li>▪ Temperature</li><li>▪ Level/Position</li><li>▪ Water Quality</li><li>▪ Atmospheric</li></ul> |

## NETWORKING

- From in-plant networking to remote wireless links
- Protocols
  - TCP/IP
  - Modbus TCP
  - Modbus RTU
- Media
  - Ethernet IP
  - DeviceNet
  - EtherCAT
  - CCLink
- Media
  - Fiber Optics
  - Copper
  - Wireless PTP/PTMP

## FIELD SERVICES & TROUBLESHOOTING

- 24/7 Support
- Safety
  - Over 4M Hours without a lost time accident
- Qualifications
  - TUV
  - MSHA
  - Safeland/Safegulf

## QUALIFICATIONS

- Rockwell Recognized System Integrator
- Samsara Partner
- Ignition IU Credentialed
- TÜV FS Certified Staff
- Design Build Capabilities
- UL 508A Certified Panels
- UL 698A Certified Panels
  - Class 1 Division 2
  - Class 1 Division 1
  - Hazardous Locations (HAZ LOC)

