

PLANT AUTOMATION

Automation and Control for your Site

Pillar Innovations is an experienced turn-key provider of PLC programming, software control packages, network integration, and instrumentation for many leaders in the energy, manufacturing, and public works industries. We'll take your project from design and fabrication to installation and commissioning.

OVERVIEW

PLC & Robotic Programming

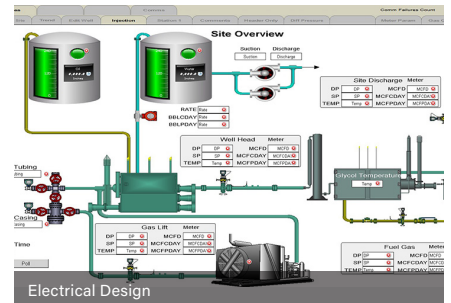
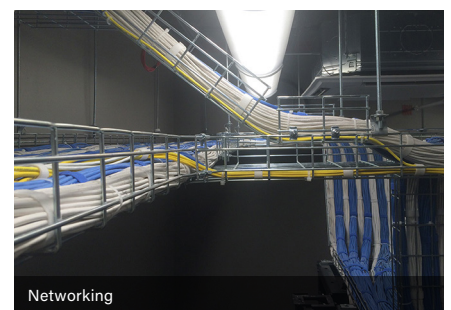
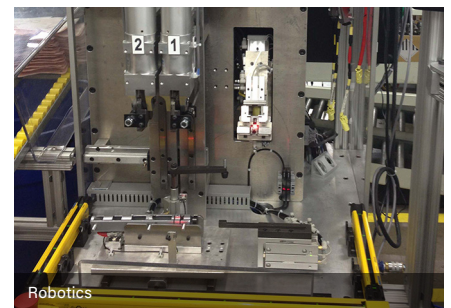
- | | |
|---|--|
| PLC Experience | Robotic Experience |
| <ul style="list-style-type: none"> ▪ Allen Bradley ▪ Schneider Electric ▪ Siemens ▪ Omron ▪ Mitsubishi ▪ Proface ▪ Beckhoff ▪ Toyopuc ▪ Horner | <ul style="list-style-type: none"> ▪ Fanuc ▪ Motoman/ Yaskawa ▪ ABB ▪ Mitsubishi ▪ Denso ▪ Yamaha |

Electrical Design, Panel Design, & Fabrication

- | | |
|--|--|
| Panel Design & Fabrication | Hazardous Location Design & Fabrication |
| <ul style="list-style-type: none"> ▪ UL 508A Listed Panel Shops ▪ NFPA 70E | <ul style="list-style-type: none"> ▪ ATEX ▪ MSHA |

Machine Design, Fabrication, & Retooling

- Custom Machines from Concept to Production
- 100,000 sq. ft. Fabrication Shop
- Design



Machine Vision

- Programming, Training, Setup, Troubleshooting, Commissioning
- Experience:
 - Cognex
 - Keyence
 - Banner

Instrumentation & Calibration

- | Protocols | Applications |
|--|--|
| <ul style="list-style-type: none">• HART• 4-20ma• Modbus• 0-5/10V | <ul style="list-style-type: none">• Flow• Pressure• Temperature• Level/Position• Water Quality• Atmospheric |

Networking

- From in-plant networking to remote wireless links
- Protocols
 - TCP/IP
 - Ethernet IP
 - DeviceNet
 - EtherCAT
 - CClink
- Media
 - Fiber Optics
 - Copper
 - Wireless PTP/PTMP

Field Services & Troubleshooting

- 24/7 Support
- Safety
 - Over 4M Hours without a lost time accident
 - Qualifications
 - TUV
 - MSHA
 - Safeland/Safegulf

Qualifications

- | | |
|--|---|
| <ul style="list-style-type: none">• Rockwell Recognized System Integrator• UL 508A Certified Panels• UL 698A Certified Panels• Class 1 Division 2 | <ul style="list-style-type: none">• Class 1 Division 1• Hazardous Locations (HAZ LOC)• TÜV FS Certified Staff• Design Build Capabilities |
|--|---|

